



CAPABILITY STATEMENT

2025



WHO ARE WE?

The company's founders, Matthew Camilleri and Ryan Jacobson, have brought together their two previous businesses (TJU & MCAM) to form a company with the soul purpose of taking their clients asset performance goals, to their greatest potential and availability.

VEX is a family-oriented business, our goal is to bring together the right people, and the right services, to provide mechanical and structural support solutions to our valued clients in the central Queensland mining and construction industries.

With the combined knowledge and experience of the two business's joining together under the one banner, Matt and Ryan have created a one stop shop for their clients. With direct expertise in both mechanical and structural projects, along with our senior management team, VEX has the ability to plan and execute large scale shutdowns and projects from start until finish. Further supporting this is our Mackay workshop facility.



ABOUT US

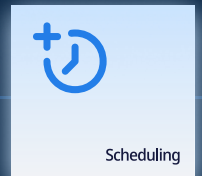
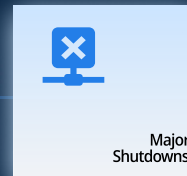
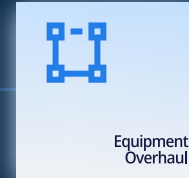
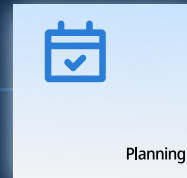
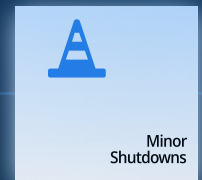
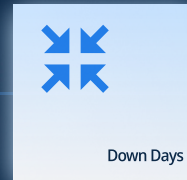
VEX FIELD SERVICES

VEX Group is continuing to grow and is well on the way to being considered as a major player in Central Queensland when it comes to Shovel and Dragline maintenance. Providing consistent high quality support to multiple clients and mine sites across Central Queensland has been the catalyst in this movement for Vex Group.

Our field maintenance division is comprised of a dedicated team of experienced and enthusiastic individuals, meticulously chosen for their expertise. Including but not limited to: Project Managers, Planners, Mechanical and Structural Supervisors, Diesel Fitters, Auto Electricians, Mechanical Fitters, Boilermakers, Riggers and Trade Assistants.

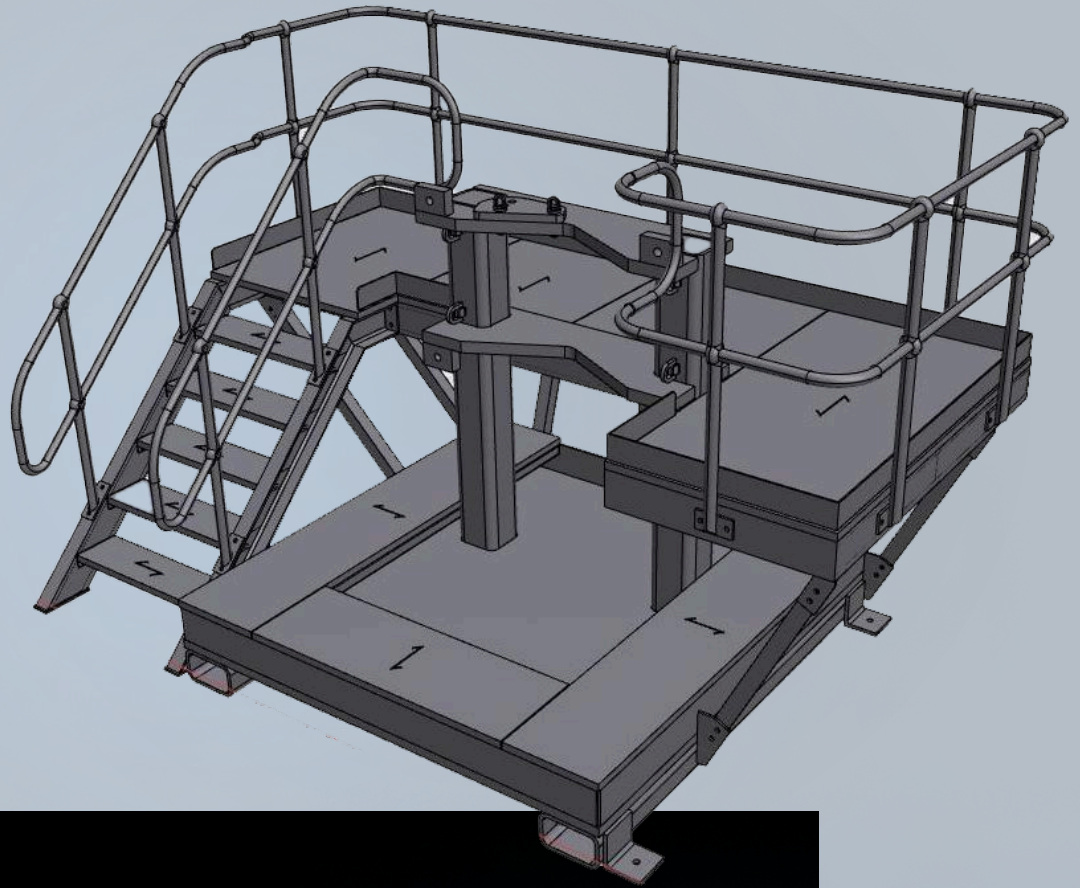
With a primary focus on maintaining Electric Rope Shovels and Draglines as our core objective, we are also dedicated to providing the below services

- ▲ Major Equipment Shutdowns
- ▲ Breakdowns & Rapid Response
- ▲ Monthly Planned Maintenance Down Days
- ▲ On-Site Tray repairs
- ▲ Dipper, Draglines and Excavator Buckets overhauls
- ▲ Boom Repairs
- ▲ Structural knowledge, support and execution



DRAGLINES AND SHOVELS





▲ INNOVATION

The VEX Group is committed to delivering innovative solutions, empowering clients to ensure their teams remain safe and efficient while carrying out maintenance duties. In an industry filled with complexities and challenges, we understand that the most effective solution is often the one driven by innovation and adaptability.

From initial concept and engineering to precision fabrication, seamless site installation, and ongoing maintenance support, we work closely with our clients to ensure their objectives are not only met but exceeded. Our collaborative approach guarantees that every project is tailored to the unique needs of each client, ensuring safety, performance and efficiency at every stage.



▲ CHPP AND MAJOR PROJECTS

VEX Group's ability to successfully execute large scale Scopes of Works within limited time frames has been recognised considerably on-site since 2022.

We have an on-site workforce size of 160 personnel, including highly experienced and motivated Supervisors and Tradespersons ready to undertake large or small scale projects and maintenance.

These are some of following areas we specialise in:

- ▲ Construction of New modules/Upgrades to Fixed Plant and Infrastructure
- ▲ Installation and Upgrades to Large Components to CHPP
- ▲ Major CHPP Shutdowns
- ▲ Ownership of ROM Systems Maintenance
- ▲ 5S Design, Fabrication and Installation
- ▲ Off-site Design and Fabrication
- ▲ Replacement of Large Scale Fixed Plant Components



HEAVY FABRICATION



FABRICATION WORKSHOP

The VEX Group's workshop is located in Mackay, the heart of the Bowen Basin in Central Queensland. We operate a well resourced workshop dedicated to supporting on-site activities with a comprehensive range of services. Our facility specialises in high-quality fabrication works tailored to field maintenance, washplant operations and a variety of small works, ensuring we cater to the diverse needs of the mining and resources sector.

Our workshop capabilities include but are not limited to:

▲ CUSTOM FABRICATION & REPAIR:

Leveraging advanced fabrication techniques, we deliver custom and client supplied solutions for field maintenance equipment, structural components for Washplants, and individualised projects. Our skilled team works with a wide range of materials to produce and repair items to the highest standards, ensuring durability and efficiency.

▲ WASHPLANT SUPPORT:

Understanding the critical importance of Washplant operations in the Bowen Basin, our workshop offers specialised services to maintain and enhance washplant efficiency. This includes the fabrication of replacement parts, upgrades to existing systems, and routine maintenance works to minimize downtime and optimize productivity.

▲ SMALL WORKS:

Recognising the unique needs of our clients, we also undertake smaller works, offering the same level of expertise and attention to detail. Whether it's custom tooling, minor repairs, or prototype development, our workshop is ready to meet client needs with precision and efficiency.

Our workshop has the capability to obtain engineering certification for their specific works, providing our clients with the assurance that the design has been certified by qualified engineering professionals. This capability is integral to our operations, as it supports our commitment to safety, reliability, and performance in the demanding environments of the Bowen Basin.

Whether it's for custom fabrication projects, washplant components, field maintenance solutions, or small works, our clients can have complete confidence in the certified quality and compliance of our products and services.

OUR TEAM



Ryan Jacobson

Director

0402 190 915

ryan@vexgroup.com.au



Matthew Camilleri

Director

0413 229 321

matt@vexgroup.com.au

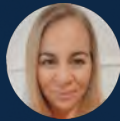


Graeme Cox

General Manager

0450 101 032

graeme@vexgroup.com.au



Courtney Nash

Workforce Planner

0481 155 810

courtney@vexgroup.com.au

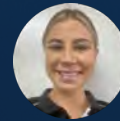


Morgen Schneider

Operations Manager

0475 411 472

operations@vexgroup.com.au



Carly Wangman

Training Co-Ordinator

0477 693 691

carly@vexgroup.com.au



Melissa Falzon

Payroll Officer

0418 890 909

accounts@vexgroup.com.au



Alice Sanderson

Accounts Administrator

0498 001 571

kayla@vexgroup.com.au



Indi Camilleri

Accounts Officer

0457 771 236

indi@vexgroup.com.au



Shai-Lei Truscott

Administration Officer

0458 588 676

shai@vexgroup.com.au



Ava Bowtell

Admin Trainee

0412 887 898

maisie@vexgroup.com.au



Kyrie Peters

Administrator

0408 209 019

kyrie@vexgroup.com.au



Andrew Potts

Workshop Foreman

0424 497 600

andrew@vexgroup.com.au



Harley Dark

BDM - Manufacturing

0488 044 048

harley@vexgroup.com.au

GET IN TOUCH WITH US

 admin@vexgroup.com.au

 [vex-group](#)

 [vex-group](#)



